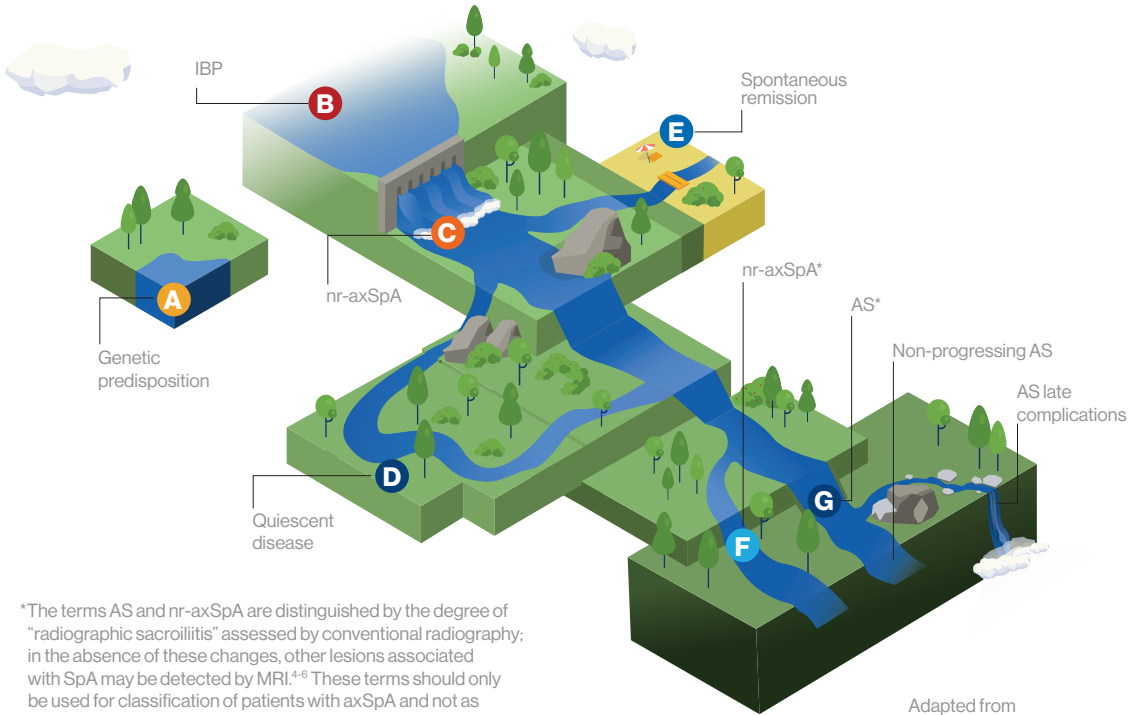


The Natural History of axSpA

Axial spondyloarthritis (axSpA) is estimated to affect 0.70% of people in the US!
 axSpA encompasses patients with axial pain both with and without radiographic damage, and shows similar prevalence between sexes (NHANES 2009-2010).^{2,3}



*The terms AS and nr-axSpA are distinguished by the degree of "radiographic sacroiliitis" assessed by conventional radiography; in the absence of these changes, other lesions associated with SpA may be detected by MRI.⁴⁻⁶ These terms should only be used for classification of patients with axSpA and not as separate diagnoses.⁵

Adapted from *The Rheumatologist*.⁴

A GENETIC PREDISPOSITION

HLA-B27 positivity is an important risk factor for axSpA, but other loci (eg, *ERAP*) are also associated with the disease⁷

B IBP

ASAS criteria for chronic back pain lasting >3 months^{8,†}:

- Onset <40 years
- Insidious onset
- Improves with exercise
- No improvement with rest
- Pain at night, improves upon rising

77.7% of IBP patients met ASAS axSpA criteria⁹

† IBP if 4/5 are present

C nr-axSpA

Other than IBP, patients can have peripheral/extrarticular symptoms (eg, arthritis, enthesitis, uveitis) that worsen patient burden^{6,10}

D QUIESCENT DISEASE

Defined as no progression of damage¹¹

E SPONTANEOUS REMISSION

Can be defined as¹²:

- ASAS partial remission
- ASAS partial remission plus imaging remission
- ASDAS inactive disease

F nr-axSpA

~74% of nr-axSpA patients had no radiographic progression to AS during their course of axSpA, over up to 15 years of follow-up¹³

G ANKYLOSING SPONDYLITIS

In one study, 60% of AS patients developed syndesmophytes and ankylosis in the spine¹⁴

References: **1.** Strand V, Rao SA, Shillington AC, Cifaldi MA, McGuire M, Ruderman EM. Prevalence of axial spondyloarthritis in United States rheumatology practices: Assessment of SpondyloArthritis International Society criteria versus rheumatology expert clinical diagnosis. *Arthritis Care Res (Hoboken)*. 2013;65(8):1299-1306. **2.** Rudwaleit M, van der Heijde D, Landewé R, et al. The development of Assessment of SpondyloArthritis international Society classification criteria for axial spondyloarthritis (part II): validation and final selection. *Ann Rheum Dis*. 2009;68(6):777-783. **3.** Reveille J, Weisman M. The epidemiology of back pain, axial spondyloarthritis and HLA-B27 in the United States. *Am J Med Sci*. 2013;345(6):431-436. **4.** Deodhar A. Rheumatologists make progress defining spectrum of axial spondyloarthritis. *The Rheumatologist*. 2014;May 2014. **5.** Deodhar A, Strand V, Kay J, Braun J. The term "non-radiographic axial spondyloarthritis" is much more important to classify than to diagnose patients with axial spondyloarthritis. *Ann Rheum Dis*. 2016;75(5):791-794. **6.** Lockwood M, Gensler L. Nonradiographic axial spondyloarthritis. *Best Pract Res Clin Rheumatol*. 2017;31(6):816-829. **7.** Sieper J, Poddubnyy D. Axial spondyloarthritis. *Lancet*. 2017;390(10089):73-84. **8.** Sieper J, van der Heijde D, Landewé R, et al. New criteria for inflammatory back pain in patients with chronic back pain: a real patient exercise by experts from the Assessment of SpondyloArthritis international Society (ASAS). *Ann Rheum Dis*. 2009;68(6):784-788. **9.** Burgos-Vargas R, Wei JC, Rahman MU, et al. The prevalence and clinical characteristics of nonradiographic axial spondyloarthritis among patients with inflammatory back pain in rheumatology practices: a multinational, multicenter study. *Arthritis Res Ther*. 2016;18(1):132. **10.** de Winter JJ, Paramarta JE, de Jong HM, van de Sande MG, Baeten DL. Peripheral disease contributes significantly to the level of disease activity in axial spondyloarthritis. *RMD Open*. 2019;5(1):e000802. **11.** Malaviya AN, Rawat R, Agrawal N, Patil NS. The nonradiographic axial spondyloarthritis, the radiographic axial spondyloarthritis, and ankylosing spondylitis: the tangled skein of rheumatology. *Int J Rheumatol*. 2017;2017:1824794. **12.** Poddubnyy D, Gensler LS. Spontaneous, drug-induced, and drug-free remission in peripheral and axial spondyloarthritis. *Best Pract Res Clin Rheumatol*. 2014;28(5):807-818. **13.** Wang R, Gabriel SE, Ward MM. Progression of nonradiographic axial spondyloarthritis to ankylosing spondylitis: a population-based cohort study. *Arthritis Rheumatol*. 2016;68(6):1415-1421. **14.** Sieper J, Braun J, Dougados M, Baeten D. Axial spondyloarthritis. *Nat Rev Dis Primers*. 2015;1:15013.

AS, ankylosing spondylitis; **ASAS**, Assessment of SpondyloArthritis international Society; **ASDAS**, Ankylosing Spondylitis Disease Activity Score; **axSpA**, axial spondyloarthritis; **ERAP**, endoplasmic reticulum aminopeptidase 1; **HLA**, human leukocyte antigen; **IBP**, inflammatory back pain; **NHANES**, National Health and Nutrition Examination Survey; **nr-axSpA**, non-radiographic axSpA.

